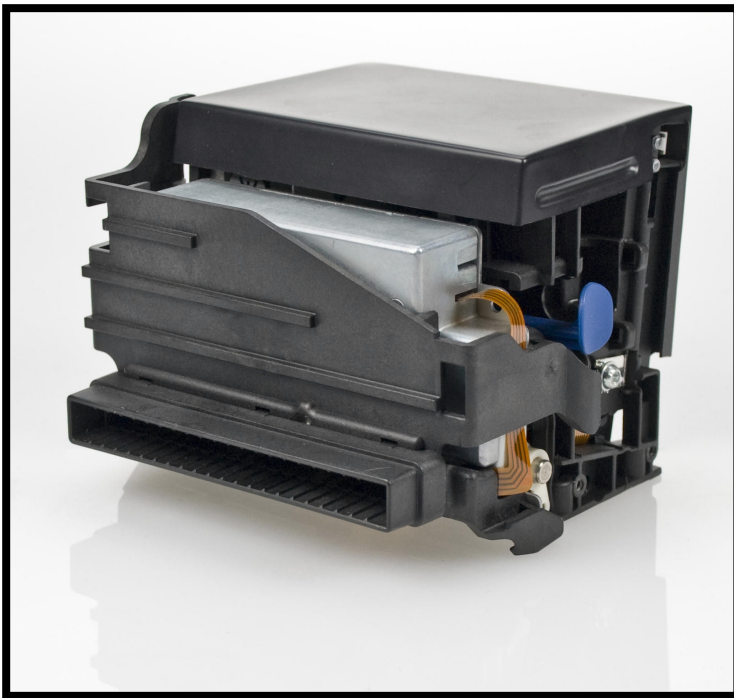


## X-80™ Thermal Printer

Versatile, Flexible and Robust!

**Perfect for Ticketing,  
Receipts and more!**



- **Fast USB or serial interface**
- **Prints up to 350 mm/second**
- **Prints/cuts stock over 250 g/m<sup>2</sup>**
- **Autocutter with optional chute/jam sensor**
- **Optional sleep mode ideal for remote, battery operation charged by solar cells**
- **Wide voltage range option allows operation from 10-36 volts, ideal for use on vehicular electrical systems.**

The Hengstler X-80 Thermal Printer is one of the most versatile printers around! Handling a paper width of 60-86 mm, the X-80 printer prints at speeds up to 350 mm/second (13.7 inches/second)! An autocutter is standard, with versions that can cut up to 250 g/m<sup>2</sup> paper stock. The design includes an integral chute that protrudes from the front of your panel, making mounting and integration simple. An optional chute/jam sensor reports if there is paper in the chute and stops printing if it detects a paper jam. The X-80 can be ordered with sleep mode, so it uses only microamps of current when not printing. This is important in remote, solar cell-charged battery systems. An optional wide voltage range allows connection to almost any vehicle's electrical system, while the X-80's wide range of paper stock thicknesses makes it ideal for printing heavy tickets.

**Have a narrow printer need? Take a look at the Hengstler X-80!**

# Hengstler X-80™ Thermal Printer

## Applications

Just a few typical applications for the X-80 include the following:

**Parking:** Often powered by batteries charged by solar cells, streetside parking systems are ideal for the X-80 due to the optional sleep mode. This reduces power consumption to almost nothing, greatly decreasing the average current needed to keep the system “alive” and decreasing power requirements. And the wide temperature and humidity range are perfect for outdoor operation

**Ticketing:** Because the X-80 is able to print and cut very heavy paper stock, it does an excellent job with ticketing, where thicker, more durable printouts are the norm. And this all fits in a compact package that takes up little room inside the kiosk or dispenser.

**Mobile Operation:** Whether it's for transit fare receipt printing, or invoices for fuel oil delivery, the X-80 is at home when on the go! With a voltage range that covers virtually any motor vehicle and vibration protection to match, the X-80 is your choice when printing is needed in your vehicle.

**Reverse Vending:** Those recycling machines are here to stay, especially as states become increasingly environmentally responsible. It's critical to be able to produce a receipt reliably, and with confirmation that the receipt has been taken. After all, it's money; take it to the cashier, and you get cash back. The chute sensor in the X-80 let's you do exactly that.

**Kiosks:** Used for almost any application today, kiosks have become ubiquitous. From loyalty programs to online ordering to configuring your sub sandwich, kiosks are here to stay. And the X-80 is the ideal partner for them. With a high print speed, fast USB or serial interface, available chassis configurations, and much more, the X-80 is flexible enough to meet the widely varying demands of the kiosk industry!

## Specifications

<b>Technology:</b>	Direct Thermal
<b>Print Speed:</b>	24 VDC: 350 mm/sec max. 12 VDC: 130 mm/sec max. 10-36 VDC: 130 mm/sec max. 203 dpi (8 dots/mm) 300 dpi (available soon)
<b>Resolution:</b>	
<b>Printhead Life</b>	
<i>Abrasion (based on 12.5% print density)</i>	100 km of paper
<i>Electrical:</i>	100 million dot pulses
<b>Graphic Driver:</b>	Windows® 2000/XP/7, Linux
<b>Bar Codes:</b>	
<i>Internally Generated:</i>	UPC-A, UPC-E, EAN-13, EAN-8, Code 39, Interleaved 2 of 5, Code 128, Codabar, PDF 417
<i>Externally Generated:</i>	Any, generated by Windows® standard GDI file by host
<b>Paper Width:</b>	2.36 to 3.38 inches (60-86 mm)
<b>Printable Width:</b>	3.15 inches (80 mm)
<b>Paper Weight:</b>	50 to 250 g/m <sup>2</sup> (cutter dependent)
<b>Paper Capacity:</b>	6 inch (150 mm) roll diameter 12 inch (300 mm) (reduced performance)
<b>Interface Type:</b>	USB 1.1 or RS-232
<b>Serial Baud Rate:</b>	9,600 to 115,200 baud
<b>Operating Voltage:</b>	24 VDC± 10% 12 VDC (11-15 VDC) (optional - available soon) 10-36 VDC (optional-available soon)
<b>Power Consumption:</b>	
In standby, approx.	3.6 VA
Sleep mode (optional)	<50 µA
Typical, approx.	2.3 amps (24VDC, 25% coverage)
<b>Cutter:</b>	Guillotine (full or partial cut) or Rotary Type (heavy stock)
<b>Dimensions (WxHxD):</b>	125 x 100 x 100 mm (approx.)
<b>Environmental Range</b>	
<i>Operating:</i>	0°C to +50°C / 25-80% RH (non-condensing) -25°C to +70°C / 20-100% RH (optional)
<i>Storage:</i>	-30°C to +75°C / Humidity as above; dependent upon option

*Also available in configurations with integral chassis and paper holder.*

**extendo**®  
plug + print

All specifications subject to change without prior notice.

“HENGSTLER” is a registered trademark of Danaher Corporation.

“Windows” is a trademark of Microsoft Corporation.

Copyright © 2006-2011 Hengstler/Danaher Sensors & Controls Group

**HENGSTLER**®

Hengstler GmbH, Uhlandstr. 49, 78554 Aldingen/Germany

Tel: +49 (0) 7424-890, Fax: +49 (0) 7424-89500

Web: [www.hengstler.com](http://www.hengstler.com) Email: [info@hengstler.com](mailto:info@hengstler.com)

April 19, 2011 – Supersedes all earlier versions