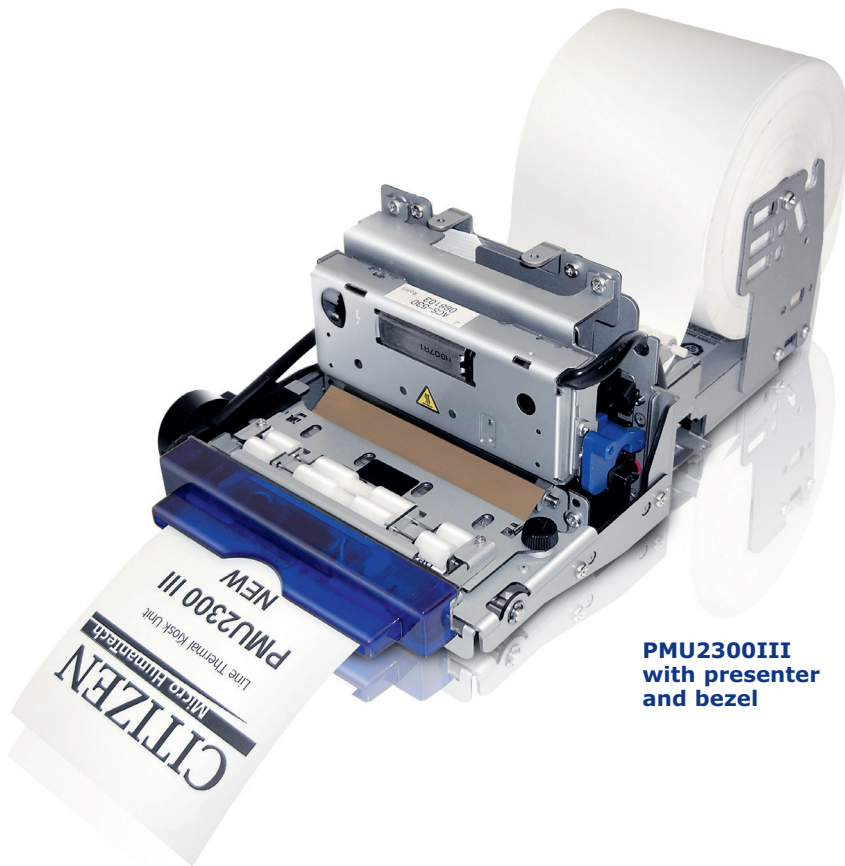


# CITIZEN

Micro HumanTech

## Compact category

### The compact size kiosk printer with all features you need



**PMU2300III  
with presenter  
and bezel**

#### Presenter & Bezel

The PMU2300III comes with a a bezel only or with presenter and bezel. Both makes it easy to integrate the printer into kiosk systems. The presenter impresses with an exhaust and retract speed of 350mm/sec. Equipped with four monochrome white LEDs the optional bezel indicates the status of the printer.

#### Different Paper Holders

The kiosk printer can operate with 2 different paper holders for paperrolls with a diameter up to 102mm and 204mm respectively.

#### Wider operating temperature

Operating in temperatures between -10°C up to 60°C the PMU2300III is suitable for indoor as well as for outdoor applications.

#### 2D Barcodes

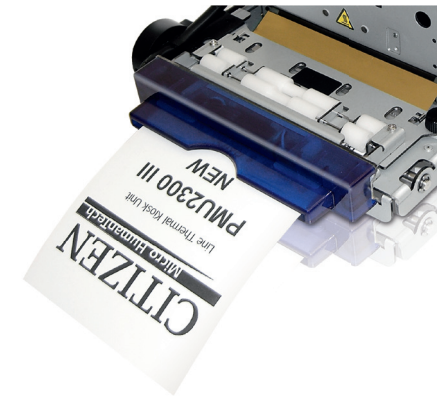
Beside standard barcodes the PMU2300III also prints PDF417 and QR code.

## PMU2300III

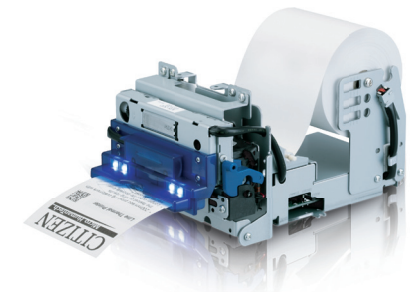
POS

### Applications

- Kiosk
- Weigh scales
- POS
- Industrial machine
- ATM



Bezel



PMU2300III without presenter

# CITIZEN

Micro HumanTech

## Specifications

<b>Model</b>	<b>PMU2300</b>
<b>Printing method</b>	Line thermal dot printing
<b>Dot pitch</b>	8 dots/mm (203 dpi)
<b>Printing speed</b>	Max. 150mm/sec (1,200 dot lines/sec)
<b>Number of columns</b>	Font A: 48 columns Font B: 64 columns Font C: 72 columns Kanji Font A: 24 columns Kanji Font C: 36 columns
<b>Character size (WxH)</b>	Font A: 1.50 x 3.00mm (12 x 24 dots) Font B: 1.13 x 3.00mm (9 x 24 dots) / Font C: 1.00 x 2.00mm (8 x 16 dots) Kanji Font A: 3.00 x 3.00mm (24 x 24 dots) / Kanji Font C: 2.00 x 2.00mm (16 x 16 dots) (As the space inside character font is included, actual character is smaller than that in the above table)
<b>Character table</b>	Alphanumeric, International character set (12 characters x 16 countries) Code page 437, 850, 852, 857, 858, 860, 863, 864, 865, 866 WPC1252, Katakana, Thai Code 18, Kanji (JIS Level 1, Level 2), Kana, JIS C 6226-1983
<b>User memory</b>	256 K bytes (User-defined characters and created logo can be registered.)
<b>Barcode type</b>	UPC-A/E, JAN(EAN), PDF417, QR code, ITF, Code39, Code128, CODABAR, Code93
<b>Line spacing</b>	4.23mm (1/6 inch); can be set by a command
<b>Paper Width</b>	80mm
<b>Thickness</b>	0,060 - 0,087mm
<b>Presenter</b>	Min ticket length: 75mm, Max ticket length: 120mm
<b>Bezel (Snout)</b>	Equipped with four monochromatic white LEDs
<b>Interface</b>	Serial (RS-232C compliant), Parallel (IEEE12184 compliant) or USB
<b>Input buffer</b>	4K bytes or 45K bytes
<b>Input power</b>	Input voltage: DC 24V± 7% / Current consumption: 1.9A (peak 6A) / Power consumption: 100W
<b>Dimensions (WxDxH) &amp; Weight</b>	PMU2300IISN: W113xH98xD182, (0,9 KG)      PMU2300IISB: W113xH98xD208, (1.0 KG) PMU2300IIPN: W113xH98xD234, (1.2 KG)      PMU2300IIPB: W113xH98xD260, (1.2 KG)
<b>Operating environment</b>	-10°C ~ 60°C, 35 ~ 85%RH
<b>Storage environment</b>	-25°C ~ 65°C, 10 ~ 90%RH
<b>Reliability</b>	Thermal head: 100,000,000 pulses or 100 km / Auto cutter: 1,000,000 cuts
<b>EMC and safety standards</b>	UL, C-UL, FCC class A, TUV, GS, CE marking

## Type Classification

PMU2300III P B RS U M1  
1) 2) 3) 4) 5) 6)

1) **Model type**  
PMU2300III

2) **Special mechanism**  
S: Standard  
P: Standard + Presenter

3) **Bezel**  
N: No Bezel  
B: Bezel equipped

4) **Interface**  
PA: Parallel  
RS: Serial  
UB: USB

5) **Destination**  
U: US/Europe/Other  
J: Japan

6) **No Mark: No Sensor**  
M1: Black Mark Sensor (left)  
M2: Black Mark Sensor (right)

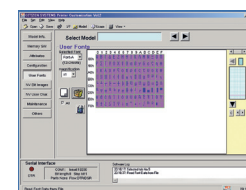
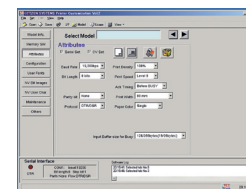
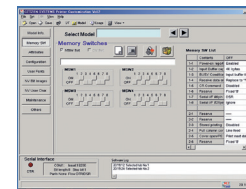
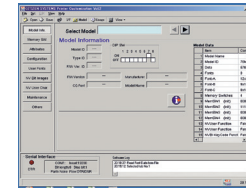
PHU-102 S  
1) 2) 3)

1) **Model type**  
PHU-102

2) **Maximum paper diameter**  
102: Ø 102mm  
203: Ø 203mm

3) **Paper insertion direction**  
S: Side insertion  
T: Top insertion

## Customization Software



## Features



- Presenter incl. retract function (option)
- Small foot print and compact design
- 150mm/sec high-speed printing
- 3 inch model (PMU2300) available
- Cutter (full/partial)
- Wider operation temperature range -10°C ~ 60°C
- Easy recovery from paper jam and easy head cleaning owing to removable head design
- Serial/Parallel/USB/ types available
- 8 dots/mm resolution
- 2 different holder units (Ø 102 or 203 mm)
- Paper thickness up to 0.087mm
- Driver: Win 2000/XP/VISTA/ 2003 Server
- Bezel (option)